

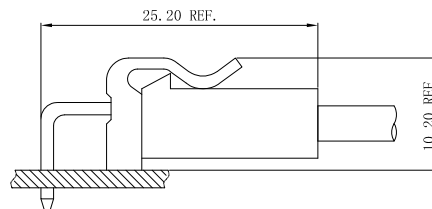
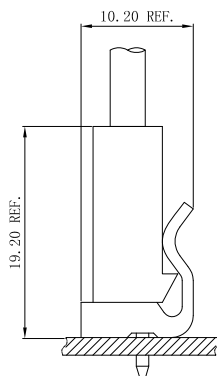
Specifications

- Voltage rating: 250V AC, DC
- Current Rating: 7A, AC, DC
- Withstand voltage: 1500V AC/minute
- Contact resistance: 10mΩ max
- Insulation resistance: 1000mΩ min
- Temperature range: -25°C ~ +85°C
- Compliant with RoHS and REACH
- Contact JVT for details

Standards



Assembly layout



JVT CONNECTORS
TEL:+86-0769-39015968/81608536
FAX:+86-0769-8535 8632
Http://www.jvt.ltd

JVT5001H

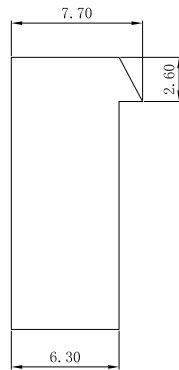
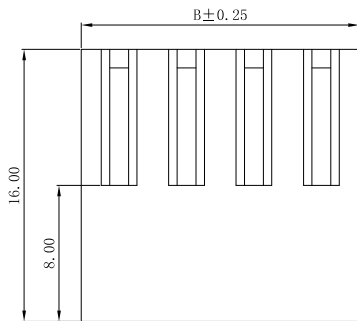
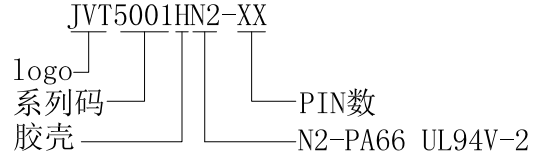
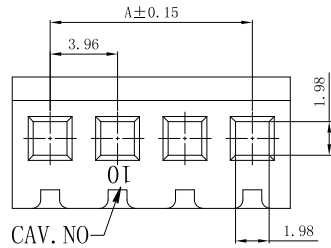
3.96mm Pitch housing

HOUSING

Part No.: JVT5001HN2-XX

Material: Nylon 66 UL94V-2

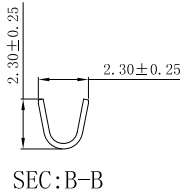
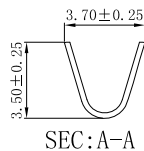
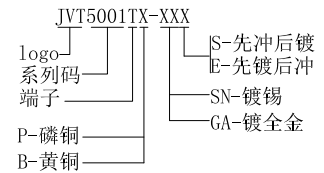
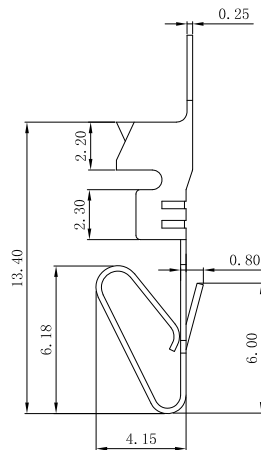
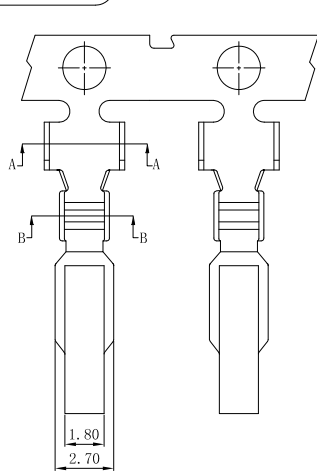
Mates With Part(s): JVT5001 Terminal



PIN	DIM. (mm)	
	A	B
02	3.96	8.43
03	7.92	12.39
04	11.88	16.35
05	15.84	20.31
06	19.80	24.27
07	23.76	28.23
08	27.72	32.19
09	31.68	36.15
10	35.64	40.11
11	39.60	44.07
12	43.56	48.03
13	47.52	51.99
14	51.48	55.95
15	55.44	59.91
16	59.40	63.87
17	63.36	67.83
18	67.32	71.79
19	71.28	75.75
20	75.24	79.71

JVT5001T

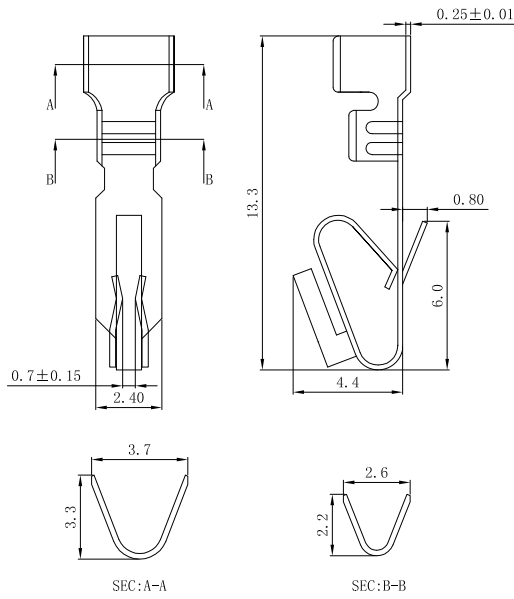
3.96mm Pitch Crimp Terminal



JVT5001TX-GAX	Phos Bronze /Brass	Gold Plated	AWG#22~18	2.7mm(Max)	JVT5001 HOUSING
JVT5001TX-SNX		Tin Plated			
PART NO	Material	Finish(Pin)	Wire Range	Insulation O.D.	Mates With Part(s)

JVT5001T

3.96mm Pitch Crimp Terminal

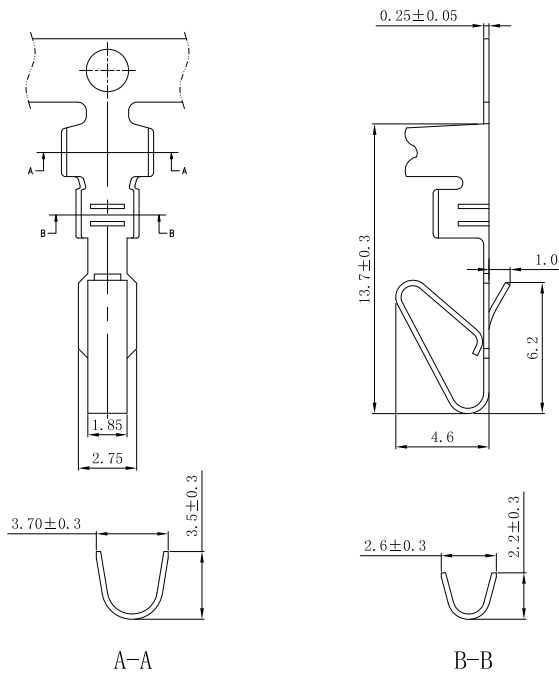


JVT5001TP-SNXA
 logo
 系列码
 端子
 P-磷铜
 S-先冲后镀
 E-先镀后冲
 SN-镀锡

JVT5001TP-SNXA	Phos Bronze	Tin Plated	AWG#22~26	2.5mm(Max)	JVT5001 HOUSING
PART NO	Material	Finish(Pin)	Wire Range	Insulation O.D.	Mates With Part(s)

JVT5001T

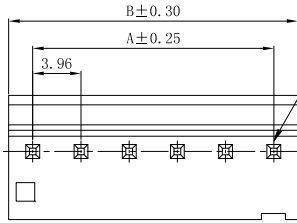
3.96mm Pitch Crimp Terminal



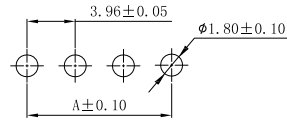
JVT5001TP-SNXH
 logo
 系列码
 端子
 P-磷铜
 H-高脚
 S-先冲后镀
 E-先镀后冲
 SN-镀锡

JVT5001TP-SNXH	Phos Bronze	Tin Plated	AWG#18~22	2.7mm(Max)	JVT5001 HOUSING
PART NO	Material	Finish(Pin)	Wire Range	Insulation O.D.	Mates With Part(s)

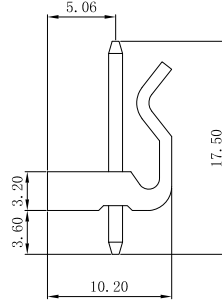
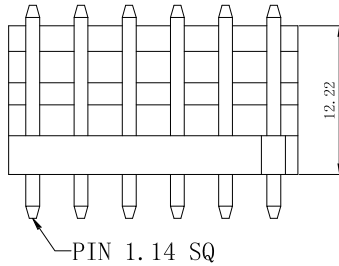
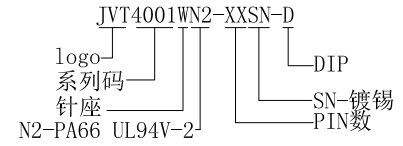
JVT4001W — 3.96mm Pitch Wafer-DIP TYPE



Circuit 1



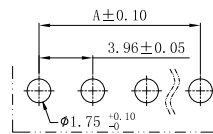
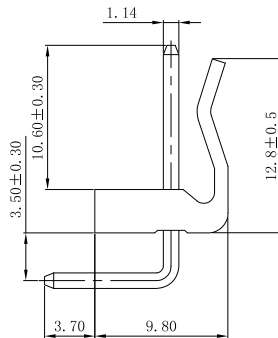
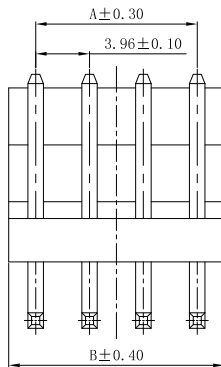
PCB LAYOUT



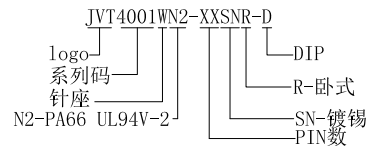
PIN	DIM. (mm)	
	A	B
02	3.96	7.92
03	7.92	11.88
04	11.88	15.84
05	15.84	19.80
06	19.80	23.76
07	23.76	27.72
08	27.72	31.68
09	31.68	35.64
10	35.64	39.60
11	39.60	43.56
12	43.56	47.52
13	47.52	51.48
14	51.48	55.44
15	55.44	59.40
16	59.40	63.36
17	63.36	67.32
18	67.32	71.28
19	71.28	75.24
20	75.24	79.20

JVT4001WN2-XXSN-D	PA66 UL94V-2	Brass	Tin Plated	JVT5001 Housing
PART NO	Material	Material(Pin)	Finish(Pin)	Mates With Part(s)

JVT4001W — 3.96mm Pitch 90°Wafer-DIP TYPE



PCB LAYOUT



PIN	DIM. (mm)	
	A	B
02	3.96	7.92
03	7.92	11.88
04	11.88	15.84
05	15.84	19.80
06	19.80	23.76
07	23.76	27.72
08	27.72	31.68
09	31.68	35.64
10	35.64	39.60
11	39.60	43.56
12	43.56	47.52
13	47.52	51.48
14	51.48	55.44
15	55.44	59.40
16	59.40	63.36
17	63.36	67.32
18	67.32	71.28
19	71.28	75.24
20	75.24	79.20

JVT4001WN2-XXSNR-D	PA66 UL94V-2	Brass	Tin Plated	JVT5001 Housing
PART NO	Material	Material(Pin)	Finish(Pin)	Mates With Part(s)